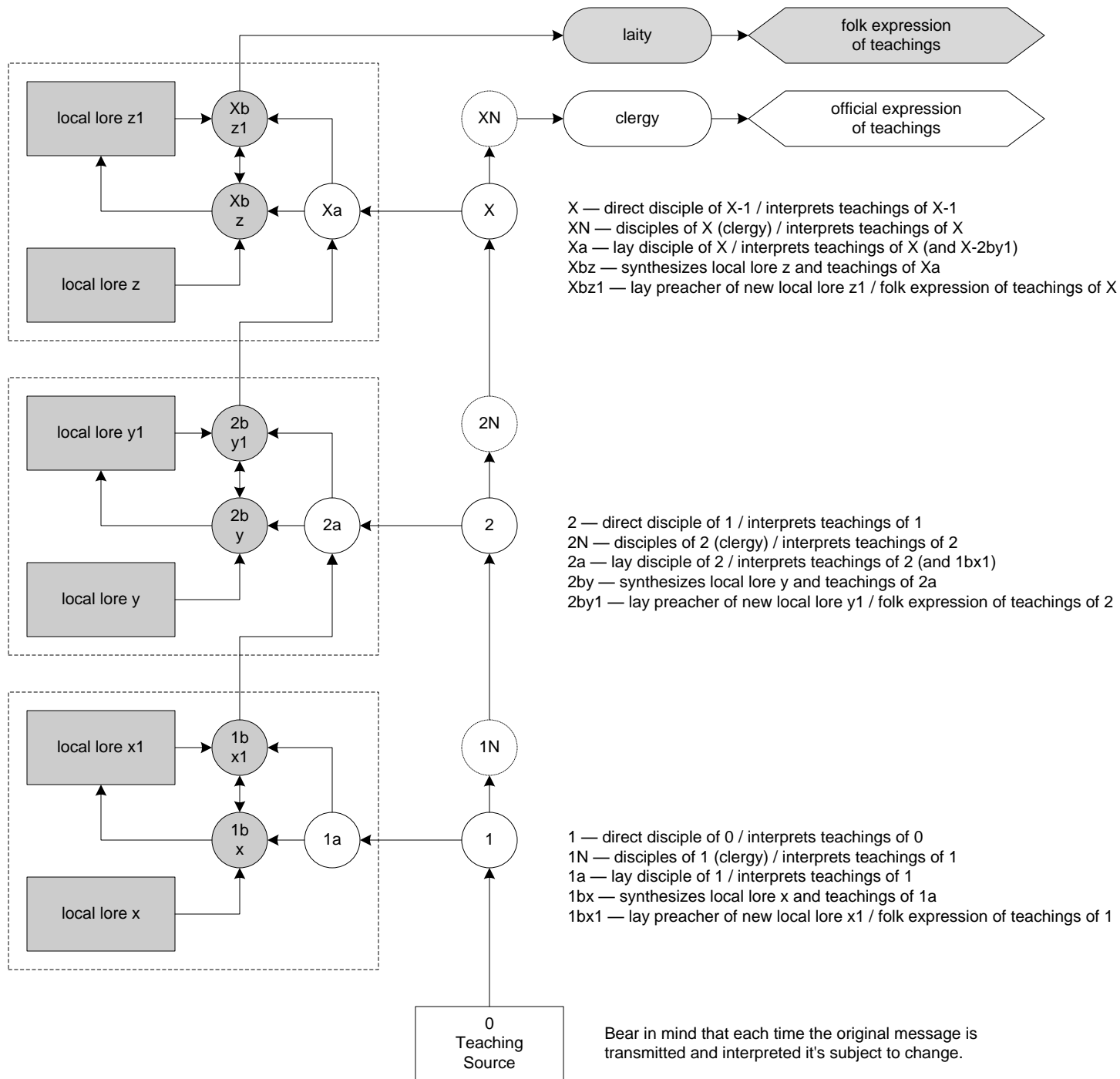


(see degradation paths for explanation of changes in teachings)



- Buddhism's Waves**
- ~470 CE
1st foreign monks
 - ~550 CE
1st Official Intro
 - ~610 CE
request for
Chinese Sutras
 - ~625-750 CE
6 schools of
nara formed
 - ~800 CE
tendai & shingon
 - ~1175 CE
amida schools
 - ~1190 CE
rinzai zen
 - ~1225 CE
sôtô zen
 - ~1650 CE
ôbaku zen

Bear in mind that each time the original message is transmitted and interpreted it's subject to change.